


IF AN INFECTED MOSQUITO BITES ME HOW LONG WOULD IT TAKE TO DEVELOP SYMPTOMS?



Most people bitten by infected mosquitoes do not develop any symptoms. However, when symptoms of infection do occur, they usually appear 5-15 days from the time you were bitten.

WHAT ARE THE SYMPTOMS OF WNV INFECTION?

Most people who are infected show no or only mild symptoms such as: low-grade fever, headache, and occasionally swollen lymph glands. More severe signs and symptoms can include: high fever, stiff neck, muscle weakness, disorientation, brain inflammation (encephalitis), coma and, rarely, death.



WHAT SHOULD I DO IF I THINK I HAVE BEEN INFECTED WITH WEST NILE VIRUS?

Contact your family physician.

HOW IS WNV TREATED?

There is no specific treatment for WNV. In more severe cases, patients are treated with supportive therapy, which can include hospitalization, intravenous (IV) fluids and respiratory support.



IF I FIND A DEAD BIRD ON MY PROPERTY WHAT SHOULD I DO?

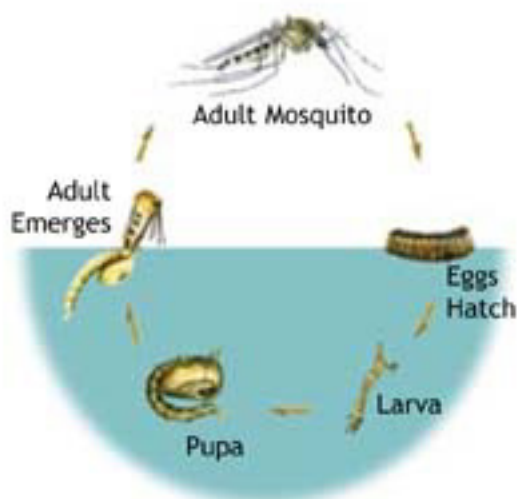
Contact your local health department for details.

WHAT SHOULD I DO IF I NOTICE A LOT OF MOSQUITOES ON MY PROPERTY?

Contact your county mosquito control agency to schedule an inspection of your property.

Mosquitoes need water to breed and grow. Almost anything that holds water for one week or longer can produce these pests. To eliminate mosquito problems, eliminate any standing water on your property.

The Mosquito Life Cycle



For Additional Information Contact:

www.state.nj.us/health

www.state.nj.us/dep/mosquito

www.state.nj.us/agriculture

www-rci.rutgers.edu/~insects/njmos.htm

www.cdc.gov/ncidod/dvbib/westnile

www.epa.gov/pesticides



Produced and Supported by:



The Office
of the
Governor



NJ Dept. of
Health and
Senior Services



NJ Dept. of
Environmental
Protection



NJ Dept. of
Agriculture

NJ State Mosquito
Control Commission

NJ Mosquito
Control Association

Rutgers University
Cook College

New Jersey Department of Health and Senior Services
Communicable Disease Service
Infectious & Zoonotic Disease Program